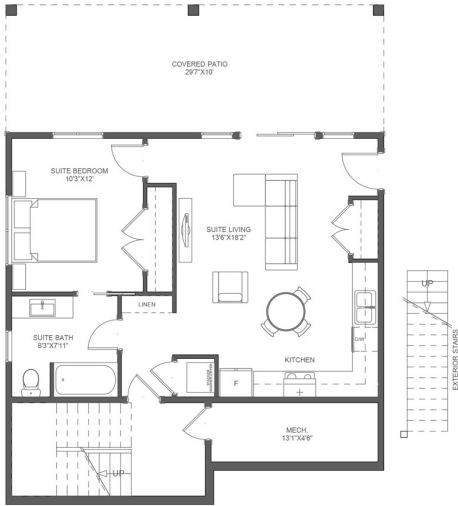




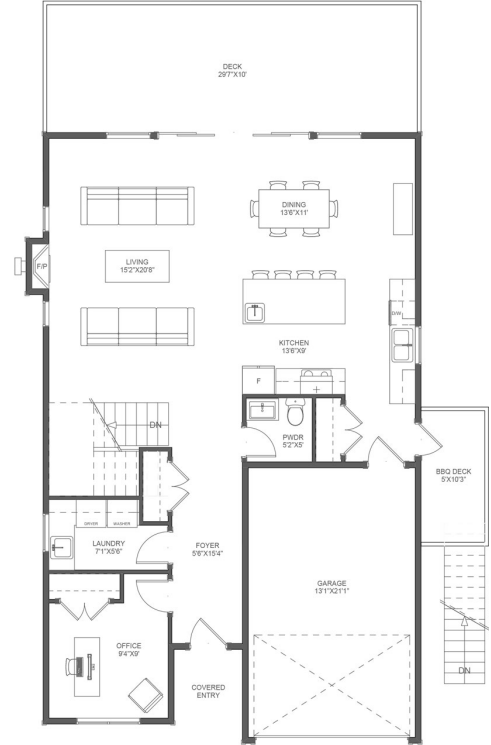
3 Bedroom + Home Office + 1 Bedroom Legal Suite



○ LOWER FLOOR PLAN (9' CEILING)
LOWER FLOOR AREA: 178.47 Sq Ft
SUITE FLOOR AREA: 624.95 Sq Ft



○ MIDDLE FLOOR PLAN (9' CEILING)
MIDDLE FLOOR AREA: 980.72 Sq Ft



○ MAIN FLOOR PLAN (9' CEILING)
MAIN FLOOR AREA: 1,050.98 Sq Ft
GARAGE FLOOR AREA: 308.00 S Ft

BEDROOMS	4
BATHROOMS	3.5
MAIN FLOOR	1,051 SQFT
MIDDLE FLOOR	981 SQFT
LOWER FLOOR	803 SQFT
TOTAL SPACE	2,835 SQFT
GARAGE	352 SQFT

