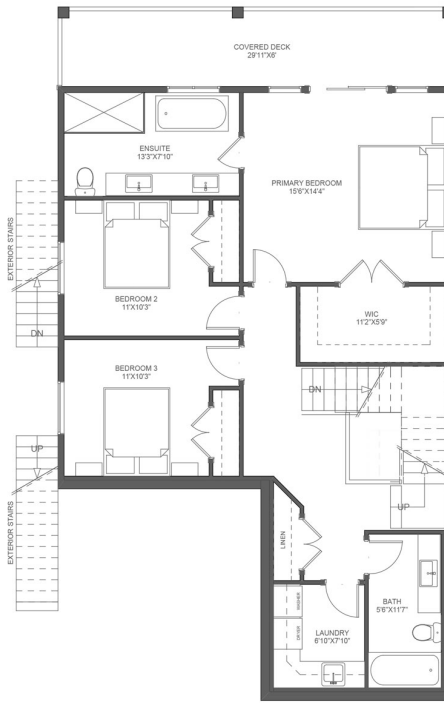




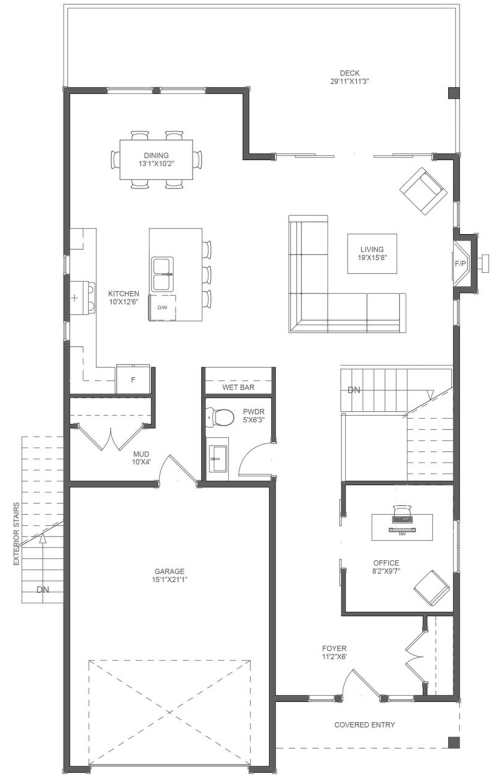
# 3 Bedroom + Home Office + 1 Bedroom Legal Suite



LOWER FLOOR PLAN (9' CEILING)  
LOWER FLOOR AREA: 247.91 Sq Ft  
SUITE FLOOR AREA: 631.99 Sq Ft



MIDDLE FLOOR PLAN (9' CEILING)  
MIDDLE FLOOR AREA: 1,102.87 Sq Ft



MAIN FLOOR PLAN (9' CEILING)  
MAIN FLOOR AREA: 1,040.93 Sq Ft  
GARAGE FLOOR AREA: 352.00 Sq Ft

BEDROOMS	4
BATHROOMS	3.5
MAIN FLOOR	1,041 SQFT
MIDDLE FLOOR	1,103 SQFT
LOWER FLOOR	880 SQFT
TOTAL SPACE	3,024 SQFT
GARAGE	352 SQFT

