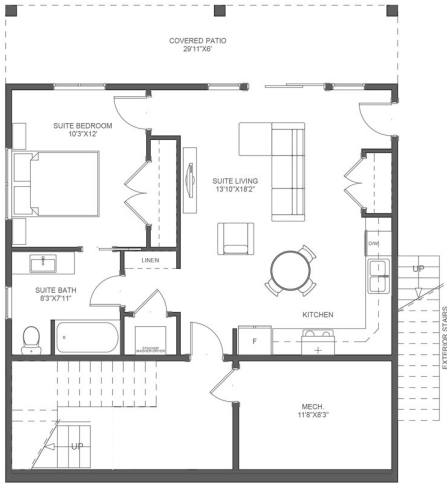
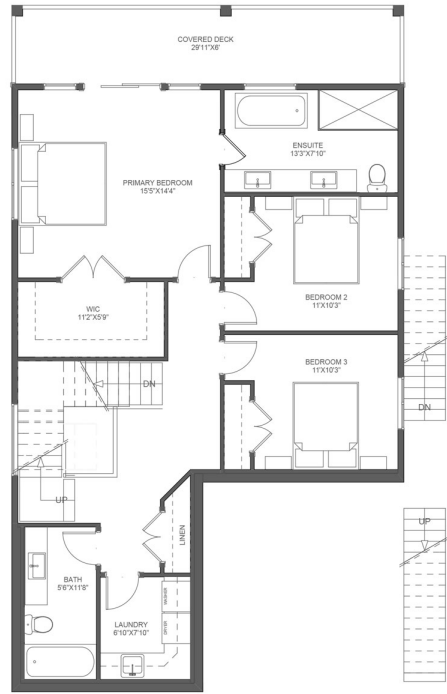




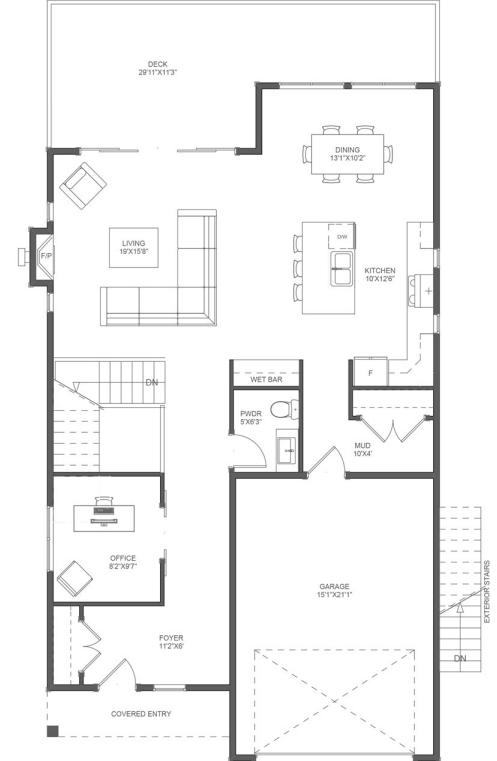
3 Bedroom + Home Office + 1 Bedroom Legal Suite



○ LOWER FLOOR PLAN (9' CEILING)
LOWER FLOOR AREA: 261.80 Sq Ft
SUITE FLOOR AREA: 632.00 Sq Ft



○ MIDDLE FLOOR PLAN (9' CEILING)
MIDDLE FLOOR AREA: 1,102.87 Sq Ft



○ MAIN FLOOR PLAN (9' CEILING)
MAIN FLOOR AREA: 1,040.93 Sq Ft
GARAGE FLOOR AREA: 352.00 Sq Ft

BEDROOMS	4
BATHROOMS	3.5
MAIN FLOOR	1,041 SQFT
MIDDLE FLOOR	1,103 SQFT
LOWER FLOOR	894 SQFT
TOTAL SPACE	3,038 SQFT
GARAGE	352 SQFT

